

Week	Home Learning	Arithmetic focus	This week's spelling	Peer comment	Parent comment	Teacher comment
------	---------------	------------------	----------------------	--------------	----------------	-----------------

Set: 09/06/23
Due: 14/06/23

WALT complete a fieldwork task.
In geography we are learning about how to collect information about our area. Can you look at the vehicles on the road where you live and create a tally chart of how many of each colour vehicle (red/blue/silver/black/white/yellow etc) or how many of each type of vehicles (van/bus/car/motorbike/lorry/pushbike)?

Challenge: Can you turn this into a graph?

WALT solve questions using charts.

Day	Temperature (°C)
Monday	7
Tuesday	9
Wednesday	11
Thursday	7
Friday	4

Which day has the lowest temperature?
Explain how you know this.

Class 10's Favourite Colours

How many children liked blue the best?
2.5 children like green the best. Why is this statement incorrect?
How many children were asked about their favourite colours?

Challenge: Look carefully at this pictogram and write down as much information as you can.

Class 10's Pets

This pictogram uses one picture to represent four children. Using this key, we can see that six children have a pet fish.

□ = 4 Children

Soon the children will be completing their MTC.

You need to be aiming to get 25/25 every time you complete an MTC!

Please ensure you practise your times tables **daily**.

List 29
supermarket
superman
superstar
antiseptic
anticlockwise
antisocial
autobiography
autograph
automatic

--	--	--	--

Set: 16/06/23
Due: 21/06/23

WALT find out items in our house that use electricity.
Make a poster with information about at least 5 appliances in your house and how electricity helps them to work.

Challenge: Can you explain what you would have to do instead of using the above examples, if there was no electricity?

WALT find acute and obtuse angles.

Decide whether the angles are acute or obtuse.

Challenge: Create a poster explaining the different types of angles.

List 30
bicycle
biplane
biped
bicentennial
biannual
bilingual
bicuspid
biceps
binoculars
bisect

--	--	--	--

Set: 23/06/23
Due: 28/06/23

WALT create a fact file about the Tudors.
In History, we are learning about the Tudors. Can you research to find out information about the Tudors and create a fact file about this?

Challenge: Can you share your information as a PowerPoint or an iMovie?

WALT recognise different triangles and quadrilaterals.
Carefully draw and name these triangles and quadrilaterals...use a ruler please!

Challenge: Can you describe a shape for someone else to guess the name of it?

List 31
accident
actually
busy
eighth
forward
forwards
guide
possess
occasion
Wednesday

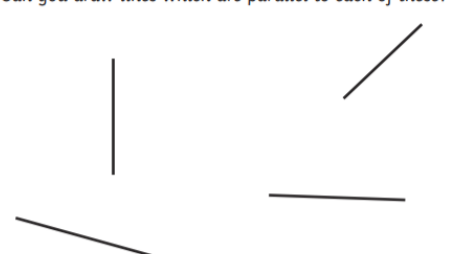
--	--	--	--

Set:
30/06/23
Due:
05/07/23

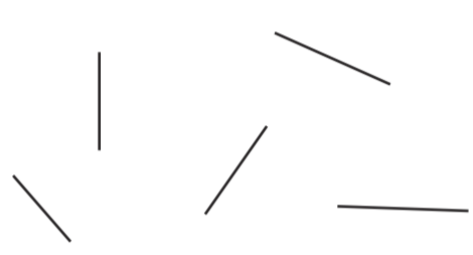
WALT write a recipe.
In DT, we are going to be learning about recipes from Mozambique. Can you choose a meal that you enjoy and write a recipe for it?

Challenge: Can you include some extra facts including where the recipe is from?

WALT identify horizontal and vertical lines and pairs of perpendicular and parallel lines
Can you draw lines which are parallel to each of these?



Can you draw lines which are perpendicular to each of these?



You may draw the **parallel** lines on these examples.

You may draw the **perpendicular** lines on these examples.

Challenge: Can explain what the different types of lines are?

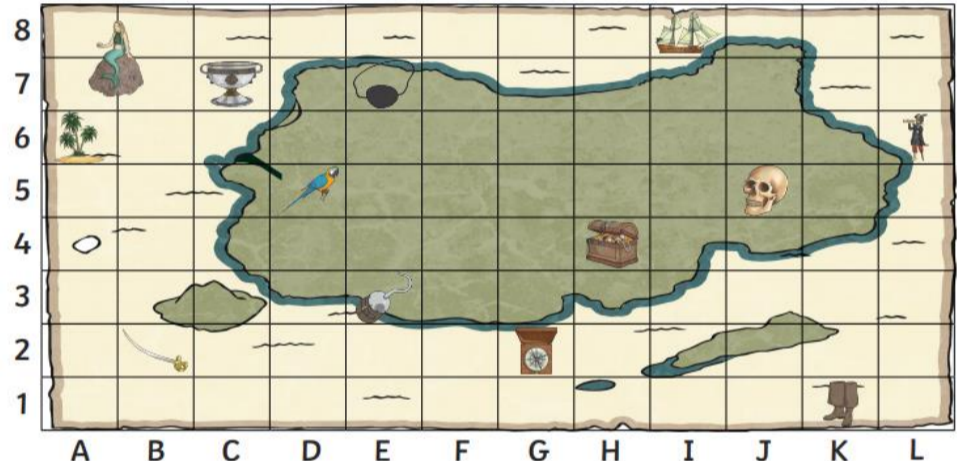
List 32
girls'
boys'
children's
men's
mice's
ladies'
cats'
women's
geese's






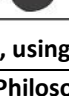
Set:
07/07/23
Due:
12/07/23

WALT persuade the current Year 3s to go to Frylands.
We hope you had a fantastic time at Frylands. Can you create a presentation/poster/letter to persuade the current Year 3s to go to Frylands?

Challenge: Can you include some anecdotes about what made it enjoyable?

WALT answer questions about coordinates.



What object is at each of these grid references on the pirate map?	Write the grid reference for each of these items on the pirate map:	Plot these grid references on the grid using a cross:
(H4) = _____	 = ()	(C8)
(B2) = _____	 = ()	(K7)
(J5) = _____	 = ()	(D1)
(C7) = _____	 = ()	(B4)
(K1) = _____	 = ()	(H6)
(E3) = _____	 = ()	(I3)

Challenge: Create your own map, using a grid reference system to plot points.

Revision
expression
musical
reluctantly
group
scene
circle
solar
supermarket
bicycle
except

Set:
14/07/23
Due:
19/07/23

WALT use our understanding of Philosophy 4 Children to consider opinions.
Consider these 4 questions. Provide supporting statements for all of them **on both sides**.
Eg, I would rather be able to turn invisible **because...**
I would rather be able to fly **because...**

Challenge: Write some mind-twisting questions for your class to ponder over.

Revision
incorrect
illegible
subject
international
believe
preparation
coronation
wildly
bravely
thoughtfully

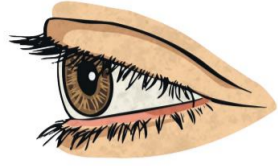
Would you rather be able to turn invisible or be able to fly?



Would you rather be lost in the jungle or in the desert?



Would you rather have one eye like a cyclops or three noses?



Would you rather be able to jump exceptionally high or run exceptionally fast?



--	--	--	--	--