

A Message From Mr Lillo

Dear Parents and Carers,

Our focus this term is very much around the well-being of our children and staff. We have been reiterating the importance of looking after each other!

As part of our monitoring, the leadership team has conducted learning walks this week. We are hugely impressed with how well the children have settled and the vast range of creative and exciting teaching and learning activities we have seen - the children are engaged and seem very happy.

Our Reception children are settling in very well and have enjoyed staying for lunch this week; these first few weeks in school are very important and I am very grateful to our Reception team for making sure that the children are settled and familiar with school routines and also to parents and carers for doing such a great job of preparing children for their first weeks at school.

Have a wonderful weekend,

Glenn and the Ryelands Team

Attendance

Attendance has been very good so far this term. Thank you for your help in making sure that your children attend school and arrive on time.

As we no longer have a staggered start to the day, punctuality is vitally important. All school gates will close at 09:00. Children arriving after that time will need to enter via the office and will be signed in as late. Classes undertake important learning first thing in the morning whilst the children are bright and fresh and it can be unsettling for children who arrive late.

If your child is unable to attend school, it is **VITALLY IMPORTANT** that you inform us of this and let us know why, before 9am on the day of absence. Please call us on 020 8656 4165 and use Option 1 to report an absence. The line will go quiet and this is when you should leave your message, giving your child's name, class and a brief reason for absence. If we are not informed of a reason for an absence, it will be recorded as unauthorised.

Should you require leave for your child, please complete a request form, available from the office. Authorised leave will only be granted in exceptional circumstances. We do not have jurisdiction to authorise family holidays or a long weekend in any circumstances.

Please can we also ask you to arrive promptly to collect your child(ren) at the end of the day.

Start & Finish Times

The school gates open at 8.40am and children must be in class by 8.50am. The gates will be closed at 9:00am and any children arriving after this time will have to go into school via the office.

At the end of the day the gates will open at around 3pm, depending on whether the playground space is being used for learning.

It is really important to a child's feeling of security that they are brought in regularly and that parents arrive and depart promptly once they are settled. Children who arrive late can become distressed and find it hard to settle to their activities. Again, at home time, please collect your child promptly as they can become very anxious if you are late.

Meet the Teacher Presentations

Each Year Group team has created a curriculum PowerPoint presentation. These have been sent to you via email. Please take some time to access any that apply to your child(ren) so you have the necessary information for the year.

Please send any questions office@oasisryelands.org and these will be sent on to the class teacher.

17TH SEPTEMBER 2021

Reception Admissions 2022

If you have a child born between 1 September 2017 and 31 August 2018, online applications can now be made for a place in next year's Reception class. The deadline for applications is Saturday 15 January 2022

You can apply online at: <https://www.croydon.gov.uk/schools-and-education/schools/school-admissions>

We will be holding a number of open mornings for prospective parents.

Monday 27th September
09:30-10:30

Saturday 9th October
10:30-11:30 and 12:00-13:30

Wednesday 20th October
09:30-10:30

Thursday 11th November
13:30-14:30

Friday 26th November
09:30-10:30

Tuesday 14th December
13:30-14:30

Morrisons Good To Grow Vouchers

We are now collecting Morrisons Good to Grow vouchers. Please send any that you are able into school.



Reception Baseline

The government has brought in a new assessment for the start of the Reception year. This baseline assessment will be carried out by your child's teacher, using interactive activities and resources. This will take place during the normal class time and the children probably won't even be aware as it is very low key. Families can find out more in this information leaflet provided by the DfE https://assets.publishing.service.gov.uk/government/uploads/system/uploads/attachment_data/file/1004560/2021_Information_for_parents_reception_baseline_assessment.pdf

If you have any questions, please don't hesitate to speak to your child's teacher.

Wellbeing Tip of the Week

Settling back into school

Overcoming Anxiety About Friendship

It's natural at times to feel insecure about our friendships and to sometimes worry that we don't have any friends. The thought of making new friends when we start anything new, like a new school, can feel quite scary too. Being away from our friends for so long made lots of us feel lonely or anxious about how it would be with our friends when we came back. Here are some tips for overcoming our anxiety

- Everyone feels the same anxiety that you do! We are all worried about saying the wrong thing or looking strange. When you realise everyone's busy worrying about themselves, it takes some of the pressure off.
- Try not to overthink everything you said or did. Chances are no one thought anything of it, and these negative thoughts can spiral and make us think things that just aren't true.
- Don't spend all your time checking what other people are doing on social media and comparing yourself. The impression people give over social media is a false reality so it's not worth worrying about.
- Don't change who you are to fit in with others. True friendships are built on people accepting each other for who they really are.

17TH SEPTEMBER 2021

Oasis Academy Ryelands Leadership Team



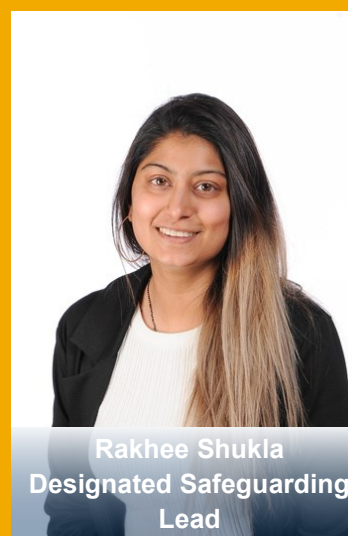
Glenn Lillo
Principal



Kate Reed
Deputy Principal



Samantha Francis
Assistant Principal and Y5
& 6 Phase Leader



Rakhee Shukla
Designated Safeguarding
Lead



Emily Carew
EYFS & Y1 Phase Leader



Collette Johnston
Y2, 3 & 4 Phase Leader

17TH SEPTEMBER 2021

Spelling Shed

This week's spelling shed class league table:

- 1st place – Raven Class
- 2nd place - Owl Class
- 3rd place - Hawk Class

This week's individual spelling shed league table:

- 1st place - Kayla, Owl
- 2nd place - Arfa, Raven
- 3rd place - Shariyah, Hawk

Class Attendance This Week

Robin	95.8%	Wren	97%
Sparrow	91.9%	Starling	88.4%
Chaffinch	97.4%	Goldfinch	97%
Kingfisher	90.3%	Woodpecker	99.3%
Magpie	94.4%	Owl	92.1%
Heron	100%	Raven	99%
Eagle	92.5%	Hawk	92%
School Weekly Total:	94.9%	School Year to Date:	95.4%

Maths Shed

This week's Maths shed class league table:

- 1st place - Raven Class
- 2nd place - Owl Class
- 3rd place - Heron Class

This week's individual Maths shed league table:

- 1st place - Kayla, Owl
- 2nd place - Dithusha, Raven
- 3rd place - Rolando, Heron

Stars of the Week

We are currently transitioning from ICARE, to the Oasis 9 Habits. This means that children can be nominated for one of the ICARE values, or one of the 9 Habits each week until October half term.

Robin	Alpha - Joyful
Wren	Jonathan - Considerate
Sparrow	Hazel - Compassionate and Considerate
Starling	Kayden - Patient
Chaffinch	Farley - Hopeful
Goldfinch	Elodie - Compassionate and Considerate
Kingfisher	Shakai - Hopeful
Woodpecker	Ethan - Joyful
Magpie	Maria - Patient
Owl	Mikhail - Patient
Heron	Birkan - Forgiving
Raven	Taidyn - Self-controlled
Eagle	Ayuanna - Joyful
Hawk	Shariyah - Compassionate



School Allotment!

Did you know we have a school allotment?

The wonderful and green fingered Miss Prosper and other FOR helpers will be there on Fridays at 10am.

We'll be busy digging the ground and doing some autumn planting. If you fancy getting involved we'd love you to. Let us know by emailing or joining the WhatsApp group or turn up on the day. We will meet at the gate at 10am.



Who are Friends of Ryelands?

We are a group of parents, grandparents, carers and teachers, who work together for the benefit of the children of Oasis Academy Ryelands. Everybody with a child at Oasis Academy Ryelands automatically becomes a member of FOR so welcome to all our new members this year.

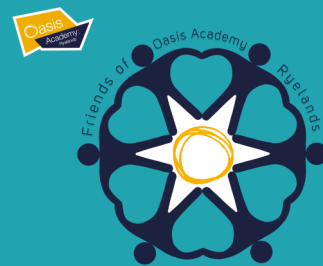
We organise and run fundraising and social activities for the school like fairs, discos and quizzes. The money raised goes back into the school.

To get involved...

join our mailing list by emailing us at friendsofryelands@gmail.com

Or joining our WhatsApp group by dropping your name and mobile number for us at the Academy Office.

Or joining Friends of Ryelands on Facebook - <https://www.facebook.com/FORyelands/?fref=ts>



Climbing mountains for FOR

Lucy, our treasurer, is raising money in aid of Friends of Ryelands by completing the 3 peaks challenge on 2nd October. Climbing the highest peaks in Scotland, England and Wales in 24 hours or less.

We are doing this as it's been a really tough 18 months for us all including our children.

We have children whose mental wellbeing needs are over and above what our wonderful school can offer.

We are raising money for a much needed wellbeing programme from local professionals.

Sponsor us here

<https://www.gofundme.com/f/lucys-three-peaks-challenge-4-friends-of-ryelands>

Please pass on to friends and loved ones too! Thank you!



Dates for your Diary

Date	Event
Fri 24th September	Pupil Parliament Elections
Mon 27th September	Open Day - 9:30-10:30
Thurs 7th October	Parents' Evening - 3:30-8:50pm
Sat 9th October	Open Day 10:30-11:30 and 12:00-1:00
Tues 12th October	Open Day 9:30-10:30
Thurs 14th October	Equality Parents' Meeting 6:00pm
Weds 20th October	Open day 09:30-10:30 Harvest Festival practice @ St. Luke's Church (PM)
Thurs 21st October	Harvest Festival @ St. Luke's Church AM Community Tea Last day of term
Fri 22nd October	INSET Day
Mon 25th November - Fri 29th November	Half Term
Mon 1st November	All children return to school

2021-2022 Term Dates

Autumn Term 1 2021

Staff Training Days - Thursday 2nd and Friday 3rd September – School closed for pupils
Monday 6th September – School open for all pupils
Thursday 21st October – Last day of term
Staff Training Day - Friday 22nd October
Half Term – Monday 25th to Friday 29th October

Autumn Term 2 2021

Monday 1st November – School open for all pupils
Friday 17th December – Last day of term
Christmas break – Monday 20th December to Monday 3rd January

Spring Term 1 2022

Tuesday 4th January – School open for all pupils
Friday 11th February – Last day of term
Half Term – Monday 14th to Friday 18th February

Spring Term 2 2022

Monday 21st February – School open for ALL pupils
Friday 8th April – Last day of term
Easter Holiday – Monday 11th to Friday 22nd April

Summer Term 1 2022

Monday 25th April – School open to ALL pupils
Bank Holiday – Monday 2nd May – School closed for pupils
Friday 27th May – Last day of term
Half Term – Monday 30th May to Friday 3rd June

Summer Term 2 2022

Monday 6th June – School open for ALL pupils
Staff Training Days – Friday 24th June and Monday 27th June
Friday 22nd July – Last day of term

**Please note that there are no early finishing times this year.
School will finish at the usual time at the end of every term.**